



CANAL COMMUNITIES LDATF
ANNUAL REPORT
2017





Table of Contents

Introduction.....	4
Demographic of the Canal Communities	4
Membership	5
2017 Membership Changes.....	7
Organisational Structures.....	8
Projects	10
Activities.....	11
CAN 2.....	11
Public Meetings	11
Community Action on Alcohol Plan	11
Family Support Respite Grant Scheme	13
Training.....	14
Community Canal Area Profile.....	14
Unemployment.....	14
Census 2016 Small Area Population Statistics	15
Profile of Drug Use	18
Treatment Statistics	19
National Drug Treatment Reporting System (NDTRS) Statistics	25
Progress of Local Drug Strategy.....	27
Interim Funded Employee Details.....	31
Work Plan 2018	33
Form A	36
Funders	43
Acknowledgements	43
References	44
Annex 1.....	45
Total Data Breakdown for Inchicore.....	45
Total Data Breakdown for Rialto.....	46
Total Data Breakdown for Bluebell	47
Maps of Electoral Divisions for the Canal Communities.....	48

Introduction

The Canal Communities Local Drugs Task Force (CCLDTF) was set up in 1997 to develop a response to the drugs issue in the Rialto, Bluebell, and Inchicore communities. It was one of fourteen Task Forces set up in 1997 in areas worst affected by drugs, in particular heroin. The Task Force aims to bring a multi-agency approach to developing appropriate responses to the drug and alcohol problems at a community level while involving key statutory, voluntary and community groups in the local area. The Task Force achieves its goals by implementing a local strategy aligned to the 5 goals identified in the recently published national alcohol and drug strategy *Reducing Harm, Supporting Recovery: A health-led response to drug and alcohol use in Ireland 2017-2025*.

<i>Reducing Harm, Supporting Recovery</i>	
Goal 1	Promote and protect health and wellbeing
Goal 2	Minimise the harms caused by the use and misuse of substances and promote rehabilitation and recovery
Goal 3	Address the harms of drug markets and reduce access to drugs for harmful use
Goal 4	Support participation of individuals, families and communities
Goal 5	Develop sound and comprehensive evidence-informed policies and actions

Demographic of the Canal Communities

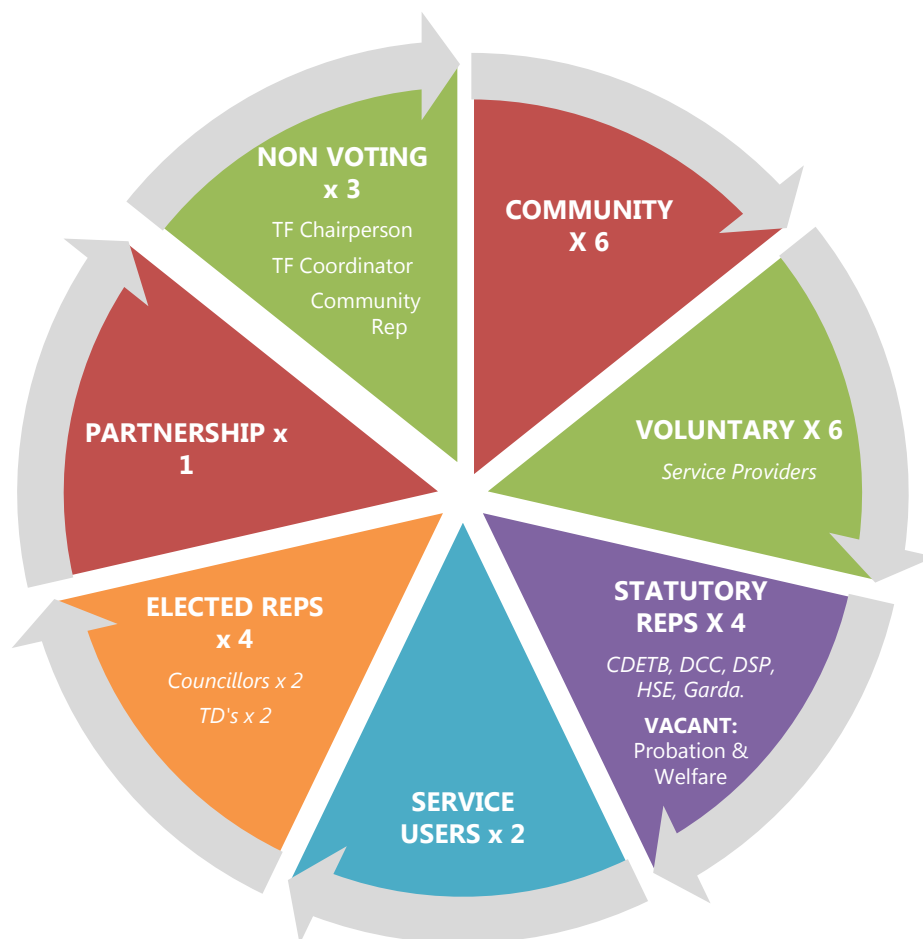
The main urban areas in the Canal Communities Area are Bluebell, Inchicore, Kilmainham, Rialto and part of Dolphin's Barn. The population of the Canal Communities area is approximately 16,000 people in 7,000 households. (Census, 2016) However, services in the area are not restricted to serving and supporting residents of these areas, people from further afield can and do make use of services in the Canal Communities area.

The area includes the large local authority flat complexes and housing estates in Bluebell, Dolphin's Barn and Inchicore. According to the Pobal HP Deprivation Index,¹ (which primarily focused on three specific dimensions of affluence/disadvantage, identified as demographic profile, social class composition and labour market situation) highlighted that the Canal Communities remain amongst the most deprived areas in Dublin.

¹ <https://maps.pobal.ie/WebApps/DeprivationIndices/index.html>

Membership

In 2017, the Canal Communities Local Drug and Alcohol Task Force had 24 members. Membership included an Independent Chairperson, two Service User Representatives, one Partnership Representative, six Community Representatives, four Statutory Representatives, six Voluntary Representatives and four Elected Representatives. The Task Force's Coordinator/Administrative Manager, Administrator and Community Representative Support Worker from the Canal Communities Regional Addiction Service (C.C.R.A.S) are also in attendance at meetings actively supporting the work of the Task Force.



While the Task Force board is strong, there are gaps evident. Having active representation from the Department of Social Protection, Department of Education and Skills, the Probation Service and the Department of Social Welfare would strengthen the collaborative working practices which have been the hallmark of Local Drug and Alcohol Task Forces past successes, and the Task Force would welcome their contribution in the future.

2017 Members of the Task Force

INDEPENDENT CHAIRPERSON	
Organisation	Name
Canal Communities Local Drug & Alcohol Task Force	Nat O' Connor
COMMUNITY SECTOR	
Organisation	Name
Bluebell Community Development Project	Tommy Coombes
Community Representative Dolphin House	Jim Monaghan
Community Representative for Rialto	Tony May
Fatima Groups United	Roisin Ryder
Bernard Curtis House	Richie Glynn
St. Michael's Family Resource Centre	Eilish Comerford
ELECTED REPRESENTATIVES	
Party / Electoral Area	Name
Independent (Ballyfermot-Drimnagh)	Paul Hand Cllr
Irish Independents 4 Change (Ballyfermot-Drimnagh)	Joan Collins TD
Sinn Féin (Ballyfermot-Drimnagh)	Aengus Ó Snodaigh TD
Sinn Féin (Ballyfermot-Drimnagh)	Greg Kelly Cllr
PARTNERSHIP	
Organisation	Name
Dublin South City Partnership	John Burns
SERVICE USER REPRESENTATIVE	
Organisation	Name
Service User Representative	Freado Hudson
Service User Representative	Niall O'Connell
STATUTORY SECTOR	
Organisation	Name
An Garda Síochána	Dave Harrington, Insp.
Dublin City Council	Paul White
Health Service Executive	Denis O' Driscoll
Inchicore Further College of Education	Donnchadh Clancy
VOLUNTARY SECTOR	

Organisation	Name
Bluebell Youth Project / Canal Communities Regional Youth Service	Bronagh O' Neill
Canal Communities Regional Addiction Service	Patrick Gates
Community Response	Nicola Perry
Inchicore Bluebell Community Addiction Team	Stuart Fraser
Rialto Community Drug Team	Alan Cleere
TURAS Training	Trevor Keogh
IN ATTENDANCE	
Organisation	Name
Canal Communities Local Drug and Alcohol Task Force (Administration Manager)	Joanne Dunne
Canal Communities Local Drug and Alcohol Task Force / Canal Communities Regional Addiction Service (Administrator)	Elaine Whelan
Canal Communities Regional Addiction Service (C.C.R.A.S) (Community Representative Support Worker)	John Bissett

In 2017, the Task Force held ten meetings on the last Monday of every month, except in the month of June where the Task force met for a facilitated strategic planning day, facilitated by an external consultant.

2017 Membership Changes

The following individuals joined the Task Force during 2017 -

- Richie Glynn (Community Representative)
- Paul White (Dublin City Council Representative)

The following individual resigned from the Task Force during 2017.

- Tony Smithers (Dublin City Council Representative)

As always, the Task Force are very grateful to its members and would like to thank all members past and present who willingly contribute their time and expertise voluntarily.

Organisational Structures

In addition to the membership above, the Task Force has four strong subgroups who contribute their work under the Task Force's remit.

Working Group

The Working Group is a permanent subgroup of the Task Force whose primary function is to act as the management committee of the Task Force.

Name	Agency
Nat O'Connor	Independent Chairperson (October - December)
Bronagh O'Neill	Regional Youth Services/Bluebell Youth Project
Denis O'Driscoll	Health Service Executive (HSE)
Jim Monaghan	Community Representative
John Bissett	Community Representative Support Worker Canal Communities Regional Addiction Service
Margaret Lamrani	Community Lynks Project
Joanne Dunne	Canal Communities LDATF

During 2017, the Task Force's Working Group had 11 meetings, every second last Monday of the month. There was no meeting in August.

Alcohol Sub Group

Name	Organisation
Norah Byrne	Canal Communities Regional Addiction Service
Lisa Buckley	F2 Centre
Eilish Comerford	St. Michael's Family Resource Centre (Task Force Member)
Joanne Dunne	Canal Communities Local Drug and Alcohol Task Force
Ciara Faughnan	Canal Communities Regional Addiction Service
Ian Lambe	An Garda Síochána
Brendan Donohoe	Rialto Community Drug Team
Thomas Mc Carthy	Core Youth Project
Paul Perth	Bluebell Youth Project / Canal Communities Regional Youth Service
Senator Lynn Ruane	Independent Politician
Roisin Ryder	Fatima Groups United

Treatment & Rehabilitation Sub Group

Name	Organisation
Alan Cleere/Marguerite Woods	Rialto Community Drug Team (RCDT)
Cathy Kerrigan	Local Employment Service (LES)
Esther Wolfe	Health Service Executive (HSE) Addiction Service Rep
Margaret Lamrani	Community Lynx Project
Nicola Perry	Community Response
Norah Byrne	Canal Communities Regional Addiction Service (C.C.R.A.S)
Stuart Fraser	Inchicore Bluebell Addictions Team (IBCAT)
Tony Coffey	TURAS
Tony Foley	Probation Service
Trevor Keogh	TURAS

Local Policing Forum (LPF)

This year, the forum met 10 times, with an average of 10 members attending.

Organisation	Number of Members
Dublin City Council	1
Local Councillors	2
Local Area Partnership	1
CCLDATF	1
Community Representatives	9

Due to the sensitive nature of this group, members are not named.

Service User Forum

During 2017 the Service User Forum had a consistent membership of 3 (two Service User Representatives and a Project Development Worker administers the group under the initiative, CC2-29) with additional service users from local organisations who regularly participated and supported key pieces of work,

Projects

Canal Communities Local Drug & Alcohol Task Force currently funds 12 projects (see list below) which run 24 initiatives aligned to actions in the National Drug and Alcohol Strategy and the National Substance Misuse Strategy. The projects continue to adopt an inter-agency approach and work on collective, collaborative pieces of work such as The National Drug Rehabilitation Committee (NDRIC) and the National Rehabilitation Framework.

- *Barnardos Rialto Family Centre*
- *Bluebell Youth Project/Regional Youth Services*
- *Canal Communities Regional Addiction Service*
- *Community Lynks Project*
- *Community Response*
- *Dolphin House Community Development Association*
- *Fatima Groups United*
- *Hesed House Family Therapy and Counselling Centre*
- *Inchicore Bluebell Community Addiction Team*
- *Rialto Community Drug Team*
- *St. Michael's Family Resource Centre*
- *St. Michael's Parish Youth Project*

The Task Force would like to acknowledge all the projects continuous hard work and successes in improving the lives of those affected negatively by substance misuse in the Canal Communities area.

Activities

CAN 2

CAN2 (Community Agencies Networking Together) is a CCLDATF funded initiative for the up-skilling and professional development of staff from Task Force funded projects. CAN2 acts as a networking platform for various sectoral interests and is used by the National Drug Rehabilitation Committee (NDRIC) as an opportunity for workers amongst projects to come together to discuss topical issues and emerging issues.

During the year, under the CAN2 Initiative, the following three information seminars were held:

Hepatitis C and HIV by Lar Murphy, Community Response, and Susan Donlon, HIV Ireland Manager of Prevention, Education & Training Services.

Wellness in the Workplace: Managing Stress & Burnout by Padraic Gibson, Consultant Clinical Psychotherapist and Clinical Director of Hesed House Counselling Service & Michelle Keenan Accredited Counsellor & Psychotherapist, and Choice Theory Reality Therapist.

Social Anxiety and Crack Cocaine by Laura Condon, Managing Director, 'Lets Get Talking Dublin' and Greg Christodoulou, Inchicore Bluebell Community Addiction Team (IBCAT)

Public Meetings

The Task Force held three public meetings during November 2017 in the Canal Communities. These meetings were used as an opportunity for the Task Force to highlight how actions and goals in the new national drug and alcohol strategy will be aligned to local strategies and informed participants on how the new national strategy aims to minimise and reduce harms caused by substance misuse at community level.

21st November - Inchicore Public Meeting

22nd November - Rialto Public Meeting

23rd November - Bluebell Public Meeting

Many thanks to all residents who actively participated and engaged in these informative meetings.

Community Action on Alcohol Plan

During 2017, the Task Force was formally accepted to be part of the National Community Action on Alcohol Programme and also became active members of the Irish Community Action on Alcohol Network (ICAAAN). To drive the Community Action on Alcohol Plan, the Task Force agreed to create a

specific subgroup for alcohol. A recruitment drive took place for this specific group. Subsequently relevant stakeholders with expertise in the field of public health joined the alcohol subgroup along with two members of the Task Force. It is the intention of this Community Alcohol Action Plan (CAAP) to further build the capacity of the Communities of Bluebell, Inchicore and Rialto by utilising a 'community mobilisation' approach and promote evidence based measures to effectively reduce alcohol related harms.

Since the alcohol subgroup was established, monthly meetings were held to create an effective Community Action on Alcohol Plan (CAAP) and to ensure it is strategically aligned to national action 1.1.1, part b. of the recently published National Drug and Alcohol Strategy *Reducing Harm, Supporting Recovery, 2017-2025*.

Family Support Respite Grant Scheme

The Family Support Respite Grant Scheme offers respite to family members who are engaging in Task Force funded projects, with a view to renewing their capacity to cope and respond to the often difficult situation they see themselves in. These situations can include but are not limited to, intimidation, drug debt, violence and anti-social behaviour and bereavement as a result of the harms caused by drug or alcohol misuse.

The current membership of the assessment board consists of five members.

This year 125 individuals benefited from the grant in 2017 (88 females and 37 males).

Service Users Involvement

To continue engaging the service users in Canal Communities, multiple meetings were held during the year to allow a safe space for Service Users to have their voices heard. Service Users also collaborated on the publication of the Vocaleyze magazine which was published during the winter and summer of 2017.

Drug and Alcohol Awareness Week

During the week of November, all of the Task Force Funded Projects actively engaged and participated in contributing to a Drug and Alcohol Awareness week. During that week our services hosted a range of events open to the public in a bid to raise awareness of alcohol, its effects and also to signpost services across the Canal Communities.

Training

On behalf of the Task Force the following training sessions were delivered:

STORM Skills Training (Suicide Prevention)

Suicide Awareness - June & October (2 Days Training)

Self Injury - October (1 Day Training)

SAOR © HSE: Screening and Brief Interventions (SBI) for Problem Alcohol & Substance Use

April 2017 - Ballymun Health Care Facility - 18 Participants

June 2017 - Bridge House Cherry Orchard - 20 Participants

November - F2 Community Centre - 17 Participants

Community Canal Area Profile

Unemployment

The statistics below are provided by the Local Employment Office (LEO) of Cork Street (CSO LRMO7)

(NOTE: The Thomas St and Apollo House Offices closed in February 2015. Figures previously provided for these offices are now from the Intreo Centre in Cork Street)

2017	
Both sexes Under 25 years	404
Male Under 25 years	251
Female Under 25 years	153

2017	
Both sexes Over 25 years	4,242
Male Over 25 years	2,667
Female	1,575

Over 25 years	
---------------	--

2017	
Both sexes (all ages)	4,646
Male (all ages)	2,918
Female (all ages)	1,728

The Local Employment Service (LES) provided the following information for the Canal Communities:

2017	
Numbers presenting in LES from Canal Communities.	607
Numbers of Full Time Work Placements from above numbers initially presenting.	100

Census 2016 Small Area Population Statistics

Note: All figures for 2016 have been extrapolated from the Central Statistics Office (CSO) via Small Population Data from the Census. 2017 data is not available to date.

Year	2016	2011	2006
Total Population	15,892	14,684	13,332

An increase in population may reflect the availability of lower cost housing within this area at the height of the economic boom.

Nationality (Partial Analysis does not include all nationalities from previous census results)

Year	2016	2011	2006
Irish	12,209	11,260	10,716
UK	279	258	238
Poland	612	695	523
Other EU	1188	688	363
Rest of World	1186	1,183	992
Not Stated	418	-	-

Households

Year	2016	2011	2006
Households	6,743	6,475	5,683

Private Households by Type

Type of Household	Households	Persons
One person	2072	2072
Married couple	664	1328
Cohabiting couple	486	972
Married couple and children	941	3637
Cohabiting couple and children	236	865
Father and children	78	179
Mother and children	794	2126
Couple and others	151	545
Couple, children and others	98	506
Father, children and others	13	47
Mother, children and others	98	382
Two or more family units	78	419
Non-family households and relations	278	709
Two or more non-related persons	756	2036
Total	6743	15823

Household Composition (Partial Analysis not including all categories within the census for previous years)

	2006	2011	% Change
One Person	-	2,246	
Couples with Children	2,014	2,161	+7
Lone Parents with Children	991	1,003	+1

Educational Attainment for Residents within the Canal Communities

Highest level of education completed for aged 15 years and over (Census 2016)

Education Level	Males	Females	Total
No Formal Education	46	36	82
Primary Education	411	454	865
Lower Secondary	424	400	824
Upper Secondary	442	474	916
Technical or Vocational qualification	238	217	455
Advanced Certificate/Completed Apprenticeship	155	91	246
Higher Certificate	107	130	237
Ordinary Bachelor Degree or National Diploma	199	182	381
Honours Bachelor Degree, Professional qualification or both	270	279	549
Postgraduate Diploma or Degree	272	340	612
Doctorate(Ph.D) or higher	31	22	53
Not stated	315	301	616

Highest Education Completed (15+) (Partial Analysis all categories listed in census for previous year(s))

	2006	2011	% Change
No Formal/Primary	2,341	1,997	-15
2nd Level Lower	1,612	1,401	-13
2nd Level Higher	1,236	1,471	+19
3rd Level	2,988	3,160	+6

As mentioned in previous reports, The YEAH project (CC2B-6) in Bluebell continues to work with young people who are outside the school system, giving individual tutoring hours both for the

Junior and Leaving Certificate subjects while supporting other young people with many of the issues which had excluded them from formal education.

Profile of Drug Use

Drug related offences reported in 2016 and 2017 for the Kevin Street/Kilmainham District are not available at present. On receipt of submission they will be forward on to the Drugs Protection Unit (DPU).

Treatment Statistics

The following page is the information provided by the Health Service Executive, Dublin Mid Leinster (HSE/DML) and the Health Research Board (HRB) in relation to those presenting for services for the Canal Communities area.

Note: CTL Statistics from the HSE have not been made available to date, as soon as they are made available this report will be updated to reflect 2017 information.

HSE Region	Task Force Area	Number of Clients in Treatment (During Period)	Regional % of clients in Treatment	National % of clients in Treatment	Number of Clients in Treatment (At end of Period)	Regional % of clients in Treatment	National % of clients in Treatment
		Jan. to Dec 2016 (During Period)			Dec. 2016 (At end of Period)		
2016	Canal Communities Task Force	225		2.0	200		2.0
		Jan. to Dec 2015 (During Period)			Dec. 2015 (At end of Period)		
2015	Canal Communities LDATF	238		2.1	215		2.2
2014		Jan. to Dec. 14 (During Period)			Dec. 14 (At end of Period)		

HSE Region	Task Force Area	Number of Clients in Treatment (During Period)	Regional % of clients in Treatment	National % of clients in Treatment	Number of Clients in Treatment (At end of Period)	Regional % of clients in Treatment	National % of clients in Treatment
	Canal Communities LDTF	245	4.7	2.2	219	4.7	2.3
2013	Canal Communities LDTF	Jan. to Dec. 13 (During Period)			Dec. 13 (At end of Period)		
		258	4.9	2.4	232	4.9	2.4
2012	Canal Communities LDTF	Jan. to Dec. 12 (During Period)			Dec. 12 (At end of Period)		
		270	5.0	2.5	247	5.1	2.6
2011	Canal Communities LDTF	Jan. to Dec. 11 (During Period)			Dec. 11 (At end of Period)		
		276	5.1	2.6	248	5.1	2.7

Gender and Treatment location of Clients from the Canal Communities area

HSE Dublin Mid Leinste r	Task Force Area	Gender & Treatment Location (During Period Jan to Dec '16)						Gender & Treatment Location (as of 31 st December '16)					
		Gender	Clini c	Trinit y	GP	Priso n	TOTAL	Gende r	Clini c	Trinit y	GP	Priso n	TOTAL
		Male	65	<10	74	15	155	Male	54	<10	70	10	135
	Canal Communitie s LDTAF 2016	Female	34	<10	33	<10	70	Female	30	<10	32	<10	65

HSE Dublin Mid Leinste r	Task Force Area	Gender & Treatment Location (During Period Jan to Dec '15)						Gender & Treatment Location (as of 31 st December '15)					
		Gender	Clini c	Trinit y	GP	Priso n	TOTAL	Gende r	Clini c	Trinit y	GP	Priso n	TOTAL
		Male	69	<10	78	19	169	Male	63	<10	72	15	153
	Canal Communitie s LDTAF 2015	Female	35	<10	33	0	69	Female	29	<10	32	0	62

HSE Dublin Mid Leinste r	Task Force Area	Gender & Treatment Location (During Period Jan to Dec '14)						Gender & Treatment Location (as of 31 st December '14)					
		Gender	Clini c	Trinit y	GP	Priso n	TOTAL	Gende r	Clini c	Trinity	GP	Pris on	TOTAL
		Male	76	<10	71	17	169	Male	69	<10	71	11	154

	Communities LDTF 2014	Female	40	<10	35	0	76	Female	30	<10	34	0	65

HSE Dublin Mid Leinster	Task Force Area	Gender & Treatment Location (During Period Jan to Dec '13)						Gender & Treatment Location (as of 31 st December '13)					
		Gender	Clinic	Trinity	GP	Prison	TOTAL	Gender	Clinic	Trinity	GP	Prison	TOTAL
	Canal Communities LDTF 2013	Male	77	<10	80	18	181	Male	67	<10	77	12	162
		Female	38	<10	36	<10	77	Female	33	<10	35	<10	70

HSE Dublin Mid Leinster	Task Force Area	Gender & Treatment Location (During Period Jan to Dec '12)						Gender & Treatment Location (as of 31 st December '12)					
		Gender	Clinic	Trinity	GP	Prison	TOTAL	Gender	Clinic	Trinity	GP	Prison	TOTAL
	Canal Communities LDTF 2012	Male	81	<10	71	25	185	Male	75	<10	69	18	168
		Female	49	<10	32	<10	85	Female	44	<10	32	<10	79
		Gender	Clinic	Trinity	GP	Prison	Total	Gender	Clinic	Trinity	GP	Prison	Total

			c	y		n		r	c	y			
HSE Dublin Mid Leinster	Canal Communitie s LDTF 2011	Male	88	<10	69	22	186	Male	83	<10	63	16	169
		Female	50	<10	38	<10	90	Female	44	<10	33	<10	79

Age of Clients in Treatment for the Canal Communities LDTF area

HSE Dublin Mid Leinster	Task Force Area	Age of Clients in Treatment (During Period Jan to Dec.									Age of Clients in Treatment as of 31st of Dec.								
		0-15	16-19	20-24	25-29	30-34	35-39	40-44	45+	TOTAL	0-15	16-19	20-24	25-29	30-34	35-39	40-44	45+	TOTAL
2016	Canal Communities LDATF	0	0	<10	10	30	64	54	66	225	0	0	<10	<10	18	53	58	63	200
2015	Canal Communities LDATF	0	0	<10	14	34	71	64	54	238	0	0	<10	12	23	69	57	53	215
2014	Canal Communities LDATF	0	0	<10	19	50	71	58	45	245	0	0	<10	14	42	64	54	44	
2013	Canal Communities	0	0	<10	25	59	74	55	43	258	0	0	<10	20	52	69	52	37	232

	LDTF																		
2012	Canal Communities LDTF	0	0	<10	35	67	73	51	38	270	0	0	<10	29	61	68	49	36	247
2011	Canal Communities LDTF	0	0	<10	37	86	70	45	29	276	0	0	<10	32	79	63	42	26	248

National Drug Treatment Reporting System (NDTRS) Statistics

Below are the statistics provided by the Health Research Board (HRB) for Canal Communities which relate to those who presented for treatment in 2016. **The Health Research Board (HRB) has advised the Task Force that data for 2017 will not be available until later, during the summer period.**

Reason for referral in Canal Communities

	2016	2014	2013	2012	2011	2010
Alcohol	22	36	38	43	26	33
Drug	64	118	147	91	91	90
Eating Disorder	0	0	0	0	0	0
Gambling	0	0	≤5	2	1	0
Spending	0	0	0	0	0	0
Concerned Person	<5	<5	≤5	5	3	5
Other Problem	<5	0	0	0	0	0
Total	92	156	192	141	121	128

Note - In the above table all cells with less than 5 cases have been suppressed to ensure that individuals are not indirectly identified.

Further breakdown of referral(s) for in Canal Communities

Reason for Referral - Detail	Total 2016	Total 2014	Total 2013	Total 2012
Opiates	33	69	86	57
Ecstasy		<5	0	0
Cocaine		11	7	9
Other stimulants		<5	<5	<5
Benzodiazepines	8	9	6	12
Volatile inhalants		0	0	0
Cannabis	11	24	27	12
Alcohol	21	36	35	43
Others		<5	<5	<5
Total	80	154	163	134

Note - In the above table all cells with less than 5 cases have been suppressed to ensure that individuals are not indirectly identified.

Ever injected	2017	2014	2013	2012	2011
Yes	33	51	61	42	39
No	45	67	88	76	65
Not known	>5	17	14	9	5
Total	78	135	163	127	109

The Task Force would like to thank the Health Research Board (HRB) for supplying the NDTRS statistics above in relation to the Canal Communities.

Progress of Local Drug Strategy

Canal Communities Local Drug and Alcohol Task Force progress in implementing the Local Drugs Strategy under each of the five pillars identified in the National Drugs Strategy:

- Supply Reduction
- Prevention
- Treatment
- Rehabilitation
- Research

Supply Reduction	To build on the previous year's collaborative working between community, statutory and voluntary organisations & agencies to respond to issues locally	Ad hoc meetings to respond to single issues within the area i.e. extreme violence, anti-social, public and underage drinking; and racism have improved communication between all sectors
	To continue to hold public meetings to promote the Local Policing Forum (LPF)	3 public meetings per year.
	To improve membership of safety committees in all areas	Restructured public safety meetings to a World Cafe Style in a bid to promote better engagement and participation.
	To continue to develop the collaboration with the Probation and the prison service	Connections with the Probation and Prison service continue to strengthen leading to referrals from Probation and Welfare to a number of our Projects in the area in relation to alcohol, drug free and training programmes and CE rehabilitation programmes.

	<p>To be actively involved in regeneration programmes</p> <p>To coordinate and expand the existing Harm Reduction service through partnership with HSE and local CDTs.</p> <p>To continue to have increased presence of local Gardaí in vulnerable areas.</p>	<p>Supporting the local residents and communities of St. Michael's Parish area, Tyrone Road and Emmet Road in relation to the proposed changes in the coming years. Working in line with the regeneration team and board, with special emphasis on sustainable and safe communities.</p> <p>Provide workshops on safer drug use, harm reduction and detox, in addition to offering clients ways to cope with mental health issues leading to a reduction in harmful practices by drug users.</p> <p>The Local Policing Forum and the Task Force have continued to advocate for an increase in presence for community Gardaí in Canal Communities.</p> <p>Meeting with the Minister for Justice and continue to lobby during 2017 for the development of restorative practice initiatives in Canals areas and increase in Community Gardaí.</p>
Prevention	<p>To continue to raise the issue of alcohol misuse as a priority within community area.</p> <p>To support projects to provide up to date and relevant information and training</p>	<p>Offer educational and therapeutic groups for people who have concerns about alcohol misuse.</p> <p>Relevant projects and TF members to implement the agreed NEYAI programmes in the two designated areas. This continues to impact most positively on the children of service users in the area who are included in</p>

		the programme.
	To support early intervention programmes	Increased collaborative outreach street work with youth projects and addiction teams across the area.
	Support regeneration	The continued support for social and physical regeneration programmes in two local areas by Task Force members and funded initiatives which include advocacy for tenants and service users with statutory agencies leading to fewer evictions and closer collaborative interagency work
	Awareness of Drug and Alcohol and Tertiary Prevention workshops for at risk cohort	Separate Men & Women Support Groups which included alcohol awareness & harm reduction strategies. Participants stated that they have made significant positive changes in their lifestyles as a result of the courses.
	Strengthen the strategic direction of alcohol in the Canal Communities.	Develop a strategy in line with national framework, promoting effective evidence based measures while adopting a community mobilisation approach.
Treatment	To continue to operate a broad range of community treatment initiatives and services	Collaborative practices amongst representatives from Treatment and Rehabilitation projects and active sharing of information to inform local strategies.

Rehabilitation	<p>To actively participate in roll out of NDRIC protocols across the area</p> <p>To continue to support Service Users.</p> <p>To support the Community Employment Schemes to facilitate progression for service users</p> <p>Ongoing work from the T&R sub-group</p>	<p>T&R sub group rolling out implementation of protocols in relevant projects.</p> <p>Gaps and Blocks for service users being brought to NDRIC which has proved problematic as the turnaround in response is too long for those in need.</p> <p>Two active Service Users representatives on the Task Force continue to contribute to Task Force issues. Also active representatives on the national body SURF and active in the Human Rights forum for service users – which presented to the UN commissioner for Human Rights.</p> <p>Task Force support in discussions with DSP in relation to issues of access to CE programmes, changes in the funding criteria to support the projects to continue their work.</p> <p>Low threshold programme continues to support the less stable service users in committing to specialised programmes</p> <p>Through the T&R sub group support is given to CE schemes to work more closely with local LES and businesses for work placements and jobs</p> <p>Task Force members involved with the Graduation of service users in a broad range of FETAC accredited subjects offered within CE Rehab schemes</p> <p>Informing Task Force regarding issues relating to treatment and rehabilitation that need to be addressed.</p>

Research	Conduct analysis to access research needs in Canal Communities	Regular meetings to assess and develop a needs analysis investigating areas of relevant research opportunities.

Interim Funded Employee Details

CANAL COMMUNITIES LOCAL DRUG AND ALCOHOL TASK FORCE – INTERIM FUNDED EMPLOYEE DETAILS				
Position	Functions	Pay Rate – all are <u>aligned to scales</u> listed but <u>not</u> equivalent	Source of Funding	Employing Authority
NOTE <ul style="list-style-type: none"> Salaries are <u>aligned</u> but are not equivalent to HSE scales. They are therefore no longer in line with the pay grades of their peers in the statutory agency No increments have been paid since 2009 and all staff took at 5.5% pay cut at that time There are no pension entitlements and all are subject to annual funding being available 				
Job Title	Functions	Pay Rate	Funder	Employing Authority
Project Development Worker (Part-time position)	To support the projects in - <ul style="list-style-type: none"> ➤ Administration and funding applications ➤ Implementation of the NDS with particular responsibility for the Coordination of LPF and safety committees; Developing and 	POINT 2 HSE Project Worker Scale	HSE	Canal Communities Regional Addiction Service (formerly Canal Communities LDTF Ltd)

	supporting Service User Forum			
Administrator (4 days)	<ul style="list-style-type: none"> ➤ To support the Co-ordinator in the day to day running of the Task Force, providing a full range of clerical / administrative duties and the administration of the Task Force Accounts. ➤ Dissemination of information both from the Task Force and Office of the Minister for Drugs to projects, Task Force members and other relevant bodies ➤ Assist the Co-ordinator with twice yearly government funding applications 	POINT 5 HSE Grade IV Clerical Scale	HSE	Canal Communities Regional Addiction Service <i>(formerly Canal Communities LDTF Ltd)</i>

Work Plan 2018

Name of Piece of Work	Detail	Time period	Key Players
Alcohol			
Expand on capacity of Task Force overall strategic direction on Alcohol	Provide Training Workshops on SAOR © HSE: Screening and Brief Interventions (SBI) for Problem Alcohol & Substance Use	1st - 4th Quarter	Polydrug and Alcohol Worker
	Membership in National Network for Alcohol.	1st - 4th Quarter	Task Force Alcohol Subgroup
	Development of Community Action on Alcohol Plan for Canal Communities areas in a bid to raise awareness of the physical, social and mental health risks associated with alcohol related harm to local communities.	1st - 4th Quarter	Task Force Alcohol Subgroup

Strategy			
Canal Communities Local Drug & Alcohol Task force Strategy.	Through Task Force consensus develop a strategy for the Task Force that is aligned to the goals and actions in the new national drug and alcohol strategy (Reducing Harm, Supporting Recovery)	1st - 4th Quarter	Task Force members and Chair.
Governance			
Compliance	<p>Ensure Task Force is in compliant with effective governance practices in line with the Governance Code.</p> <p>Advocate for operational governance training from HSE to support Task Force Funded projects in facilitating smooth transition from QUADS to Better Safer Healthcare Guidelines.</p>	1st - 4th Quarter	<p>Task Force Working Group and Coordinator.</p> <p>Task Force Coordinator/Task Force Funded Projects</p>
Reporting Mechanisms	Develop a standardised approach for reporting for Task Force Funded Projects.	1st - 4th Quarter	Task Force Coordinator/Task Force Funded Projects/External Consultant
Recruitment			

Review staffing levels	Recruit Task Force Coordinator.	1st - 4th Quarter	Task Force Working Group
CAN 2 Events			
Hold Presentations to inform staff on topical issues via CAN2 Initiative.	Offer informative presentations via the CAN2 Initiative for project workers across services funded by Task Force.	1st - 4th Quarter	CAN2 via Development Worker & Experts in field of issue that is being presented.
Service Level Agreements & Grant Aid Agreements			
Service Level Agreements & Grant Aid Agreements	Support Task Force Projects during SLA & GAs.	1st -2nd Quarter	Task Force Coordinator/Funded Projects/Health Service Executive (HSE)

As reflected in the work plan, the Task Force has recently developed a new local strategy in line with the national framework (*Reducing Harm, Supporting Recovery*). The Task Force is working towards operationalising the local strategy where all and actions underneath each activity will aim to be SMART (Specific, Measurable, Achievable, Relevant and Time bound).

Form A

DRUGS TASK FORCE:	Canal Communities 2017
Pillar* :	Rehabilitation
Relevant NDS Actions:	33 /34 /39 / 42
DTF Objective:	<ul style="list-style-type: none"> - To further roll out the pilot under NDRIC - Build the capacity of Service Users and their families to participate meaningfully in the DTF - To support Community Employment Schemes to facilitate the progression for service users - To promote cross agency collaboration in community voluntary and statutory sector
Outcomes:	<ul style="list-style-type: none"> • NDRIC Protocols were agreed, disseminated and are being implemented which has led to greater collaboration • Continuation of Service Users magazine • Increase in holistic treatments for service users and their families through local health projects – supported by voluntary practitioners leading to buy in from local community and better health outcomes for all allowing to continue to support the substance misuse in their recovery • Four commemorative events during the year with large attendance from the wider community reflecting the community wide support for the LDTF • Weekly Drug Free social extended to include full day activities and outings allowing the re-development of social skills and interaction with the broader community for this cohort • Drug Free drug and alcohol community events leading to greater support of need for drug and alcohol free events for all in the community • Drug Free peer support further developed delivering a range of groups and classes (fitness classes, facilitating health groups, aftercare groups, therapeutic groups, dance nights, social nights, meditation classes) to promote greater confidence leading to progression to employment, education and community

	<p>participation</p> <ul style="list-style-type: none"> Continued referral to the low threshold, NPR programme allowing less stabilised service users entry into regular programmes Continued referrals of those from NPR to special CE; education and employment while developing broad skills for future employment Launch of the new alcohol users support at year end as a joint interagency piece of work bringing in alcohol-only users to the services in the area Continued support of the development of Men's sheds with the Local Area Partnership and Health projects Mental health awareness programmes Community holistic health programmes developed through the community development workers
--	---

--

Category**:	Project Code	Project Name
Rehabilitation	CC2-3	Rialto Community Drug Team – Drop-In Worker /Health Promotion/Harm Reduction Programme/ Men's Support Group
Rehabilitation Family Support	CC2-5	Rialto Community Drug Team – Prison Outreach Worker
Rehabilitation & Family Support	CC2-7	Inchicore & Bluebell Community Addiction Team – Project Worker/ Childcare Manager
Rehabilitation & Supply Control	CC2-9	Inchicore & Bluebell Community Addiction Team – Prison Outreach Worker
Rehabilitation	CC2-13	Inchicore & Bluebell Community Addiction Team Drugs Development Worker / Drugs Project Worker
Family Support	CC2-14	CCLDTF Ltd –Respite Grant/ Polydrug & Alcohol Worker/ Drug Free Worker/ CC/D12 Initiative on Harm Reduction
Rehabilitation	CC2-20	St. Michael's Family Resource Centre - Domestic Violence

Family Support		Support Worker
Rehabilitation Family Support	CC2-21	Hesed House - Family Therapists
Rehabilitation Family Support	CC2-25	Rialto Family Centre - Child and Family Worker & Outreach Programme
Rehabilitation	CC2-30 RI	Connect Pre-induction Programme and Rehab Resource Worker Note: At the end of 2016, CC2-30 Ri was transferred from Canal Communities Training Program - TURAS to Inchicore Bluebell Addiction Team.

DRUGS TASK FORCE:	Canal Communities
Pillar* :	Treatment 2017
Relevant NDS Actions:	34 / 37 / 39 / 42/ 47
DTF Objective:	<ul style="list-style-type: none"> • To continue to operate a broad range of community treatment initiatives and services • To support projects to include a response to alcohol in their remit • To develop a third alcohol programme within the community • Develop support for those entering Hep C treatment • To develop further information access to Hep C and HIV for easier access • To further develop harm reduction programmes and the provision of needle exchange • To work toward greater collaboration with HSE in relation to the Harm Reduction programme in order to address the gaps
	<ul style="list-style-type: none"> • Continuation of community based methadone dispensing clinics in collaboration with the HSE allowing for easy access and support for service users

Outcomes:	<ul style="list-style-type: none"> • Continued community needle exchange in collaboration with HSE across the area leading to greater involvement with hard to reach cohort • Continued provision of crack pipes and foil on outreach programmes – part of the Cross Task Force initiative with Dublin 12 leading to increased outreach work and engagement with hard to reach cohort • Reduce the use programme run for adolescents allowing them to address their weed use and develop interpersonal skills • Alcohol programme with seniors in conjunction with the local CDP resulting in increased awareness within the area • Alcohol programmes with CE participants with evaluation showing a better understanding of issues around alcohol • Interagency work and good buy in strengthened through the year on this pilot. • An increased number of clients were provided with Health Promotion advice, ongoing referral, drug paraphernalia, ongoing support and crisis intervention 	
Category**:	Project Code	Project Name
Treatment	CC2-3	Rialto Community Drug Team – Drop-In Worker/ Health Promotion/Harm Reduction Programme
Treatment & Family Support	CC2-7	Inchicore & Bluebell Community Addiction Team – Project Worker/ Childcare Worker
Treatment and Family Support	CC2-13	Inchicore & Bluebell Community Addiction Team – Addiction Project Workers
Treatment	CC2-14	CCLDTF Ltd - Polydrug and Alcohol Worker/ Project Development Worker/ Harm Reduction Coordinator
Treatment and Family Support	CTF-2	Community Response – Hep C/HIV and Alcohol

DRUGS TASK FORCE: Canal Communities 2017

Pillar* :

Supply Reduction

Relevant NDS Actions:	2 / 3 / 4	
DTF Objective:	<ul style="list-style-type: none"> • Develop more collaborative approach to reporting local issues including drug dealing; drug using and anti-social behaviour • To recruit new members to the Local Policing Forum when relevant • To support greater collaboration with the Prison service • To be actively involved in regeneration programmes • Continued participation on Regeneration boards to ensure social regeneration is kept on the agenda 	
Outcomes:	<ul style="list-style-type: none"> • Increased number of Local Policing Forums and community safety meetings leading to greater inroads into local issues • Hosted public events in relation to community safety where new issues were brought to the attention of the LPF • The team of Community Prison Links Workers across all Task Forces workers continue to work in a coordinated way and which has led to increased referrals from one area to another. Community Prison Links workers continue to develop the integrated case management in relation to sentencing on behalf of the clients. • Increased public role for community policing which has led to increased confidence in reporting to the Garda • Referral by Probation Service to local educational and health programmes which has further supported the clients' re-integration into the community. • Regeneration of one housing complex – Dolphin House – has commenced and resident participation has supported the Local Policing Forum and 	
Category**:	Project Code	Project Name
Supply Control	CC2-29	Canal Communities LDTF – Administration & Project Development Worker

Supply Control	CC-15	Community Rep Support Worker
Supply Control	CC2-5	Community Drug Team – Prison Outreach Worker
Supply Control & Rehabilitation	CC2-9	Inchicore Community Drug Team – Prison Outreach Worker

DRUGS TASK FORCE:	Canal Communities 2017
Pillar* :	Prevention
Relevant NDS Actions	19 ; 22; 29; 30
DTF Objective:	<ul style="list-style-type: none"> • To continue to raise the issue of alcohol misuse as a priority within the TF area • To organise workshops and where possible, training, for projects and the community on a range of issues • To support projects to provide up to date and relevant information and training • Further develop outreach programmes for drug using and at risk youth not presenting to the services • To continue to support the two early learning initiatives in the area and to further develop the cross collaboration which this has brought about • To further target early school leavers to return to academic system • To work to promote the services offered by organisation in the area
Outcomes:	<ul style="list-style-type: none"> • A series of workshops for CE scheme participants in relation to alcohol were organised with good attendance and satisfaction at the understanding of both immediate and long term issues in relation to alcohol • Alcohol programme for those on parole referred by Probation and Welfare • Alcohol programmes for targeted groups run throughout the year • Increased number of targeted early school leavers presenting for

	<p>subjects in both Junior and Leaving Certificate examinations offering them the skills to continue in education or progress into employment.</p> <ul style="list-style-type: none"> • Increased number of children accessing the childcare elements of the projects • Active continued involvement by a broad range of statutory and voluntary agencies with Task Force initiatives in early learning programmes 	
Category**:	Project Code	Project Name
Prevention	CTF-2	Community Response - Hepatitis C/HIV Community Health
Prevention	CC-15	Community Representative Support Worker
Prevention	CC2-1	St. Michael's Parish Youth Project – Programme for Young Drug Users
Prevention	CC2-2	Bluebell Youth Project
Prevention & Family Support	CC2-20	St. Michael's Family Resource Centre - Domestic Violence Resource Worker
Prevention	CC2-24	Regeneration Worker to Address Drug Issues
Prevention & Family Support	CC2-26	Fatima Groups United – Assistant Childcare Worker (Fatima Crèche)
Prevention	CC2B-6	Bluebell Youth Project – YEAH Project
<p>* A separate form should be completed for each Pillar</p> <p>** Category should be as per Section 7 of the L/RDTF 1 form</p>		

DRUGS TASK FORCE: Canal Communities 2017		
Pillar* :	Research	
Relevant NDS Actions:	98 – Research	
DTF Objective:	Continuing supporting national/local evidence of drug and alcohol issues.	
Outcomes:	The Task Force will conduct a needs analysis to identify gaps in research.	
Category:	Project Code	Project Name

Funders

The following organisations fund the projects in Canal Communities Local Drug and Alcohol Task Force .

- City of Dublin Youth Service Board (CDYSB)
- Department of Justice (DOJ)
- Dublin City Council (DCC)
- Health Service Executive (HSE)

Acknowledgements

Many thanks for all the external organisations who contributed to this report.

- Central Statistics Office (CSO)
- Health Research Board (HRB)
- Health Service Executive (HSE) /Dublin Mid Leinster (DML)
- Local Employment Service (LES)

References

Census 2016 (Small Population Results)

<http://census.cso.ie/sapmap/>

HP Pobal Deprivation Indices

<https://maps.pobal.ie/WebApps/DeprivationIndices/index.html>

Annex 1

Total Data Breakdown for Inchicore

Location	Birthplace	Nationality
Ireland	7,143	7,395
UK	420	156
Poland	388	426
Lithuania	50	57
Other EU 28	656	703
Rest of World	1,132	770
Not stated	0	282
Total	9,789	9,789

Type of Household	Households	Persons
One person	1218	1218
Married couple	447	894
Cohabiting couple	345	690
Married couple and children	624	2369
Cohabiting couple and children	135	483
Father and children	44	103
Mother and children	402	1056
Couple and others	106	383
Couple, children and others	56	290
Father, children and others	8	28
Mother, children and others	57	224
Two or more family units	47	248
Non-family households and relations	164	427
Two or more non-related persons	510	1332
Total	4163	9745

Education Level	Males	Females	Total
No Formal Education	41	54	95
Primary Education	334	404	738
Lower Secondary	338	338	676
Upper Secondary	410	435	845
Technical or Vocational qualification	236	210	446
Advanced Certificate/Completed Apprenticeship	152	101	253
Higher Certificate	121	161	282
Ordinary Bachelor Degree or National Diploma	276	257	533
Honours Bachelor Degree, Professional qualification or both	492	501	993
Postgraduate Diploma or Degree	454	573	1027
Doctorate(Ph.D) or higher	52	57	109
Not stated	425	370	795
Total	3331	3461	6792

Total Data Breakdown for Rialto

Total Ushers D & E		
Country	Birthplace	Nationality
Ireland	2,887	3,065
UK	167	65
Poland	110	112
Lithuania	12	11
Other EU 28	271	291
Rest of World	495	329
Not stated	0	69
Total	3,942	3,942

Total Ushers D & E		
Type of Household	Households	Persons
One person	609	609
Married couple	143	286
Cohabiting couple	109	218
Married couple and children	193	753
Cohabiting couple and children	74	274
Father and children	22	48
Mother and children	252	694
Couple and others	33	118
Couple, children and others	22	108
Father, children and others	1	3
Mother, children and others	22	80
Two or more family units	13	63
Non-family households and relations	75	186
Two or more non-related persons	197	568
Total	1765	4008

Total Ushers D & E			
Education Level	Males	Females	Total
No Formal Education	23	12	35
Primary Education	169	180	349
Lower Secondary	172	172	344
Upper Secondary	203	212	415
Technical or Vocational qualification	92	86	178
Advanced Certificate/Completed Apprenticeship	68	37	105
Higher Certificate	60	66	126
Ordinary Bachelor Degree or National Diploma	109	92	201
Honours Bachelor Degree, Professional qualification or both	139	141	280
Postgraduate Diploma or Degree	149	196	345

Doctorate(Ph.D) or higher	17	11	28
Not stated	118	105	223
Total	1319	1310	2629

Total Data Breakdown for Bluebell

Location	Birthplace	Nationality
Ireland	1,841	1,749
UK	61	58
Poland	70	74
Lithuania	14	14
Other EU 28	63	112
Rest of World	112	87
Not stated	0	67
Total	2,161	2,161

Type of Household	Households	Persons
One person	245	245
Married couple	74	148
Cohabiting couple	32	64
Married couple and children	124	515
Cohabiting couple and children	27	108
Father and children	12	28
Mother and children	140	376
Couple and others	12	44
Couple, children and others	20	108
Father, children and others	4	16
Mother, children and others	19	78
Two or more family units	18	108
Non-family households and relations	39	96
Two or more non-related persons	49	136
Total	815	2,070

Education Level	Males	Females	Total
No Formal Education	13	13	26
Primary Education	128	138	266
Lower Secondary	143	128	271
Upper Secondary	118	136	254
Technical or Vocational qualification	69	69	138

Advanced Certificate/Completed Apprenticeship	39	26	65
Higher Certificate	23	27	50
Ordinary Bachelor Degree or National Diploma	30	35	65
Honours Bachelor Degree, Professional qualification or both	34	48	82
Postgraduate Diploma or Degree	22	20	42
Doctorate(Ph.D) or higher	3	2	5
Not stated	109	121	230
Total	731	763	1,494

Maps of Electoral Divisions for the Canal Communities

Inchicore A (Inchicore)

http://census.cso.ie/sapmap2016/Results.aspx?Geog_Type=ED3409&Geog_Code=2AE196291D8613A3E055000000000001

Kilmainham B (Inchicore)

http://census.cso.ie/sapmap2016/Results.aspx?Geog_Type=ED3409&Geog_Code=2AE196291D8C13A3E055000000000001

Kilmainham C (Inchicore)

http://census.cso.ie/sapmap2016/Results.aspx?Geog_Type=ED3409&Geog_Code=2AE196291D8D13A3E055000000000001

Inchicore B (Bluebell)

http://census.cso.ie/sapmap2016/Results.aspx?Geog_Type=ED3409&Geog_Code=2AE196291D8713A3E055000000000001

Ushers D (Rialto)

http://census.cso.ie/sapmap2016/Results.aspx?Geog_Type=ED3409&Geog_Code=2AE196291DF713A3E055000000000001

Ushers E (Rialto)

http://census.cso.ie/sapmap2016/Results.aspx?Geog_Type=ED3409&Geog_Code=2AE196291DF813A3E055000000000001



c/o Bridge House, Cherry Orchard Hospital, Ballyfermot, Dublin 10

